

Local Quilt Shop Day 2024

Block - 6 1/2" x 6 1/2"

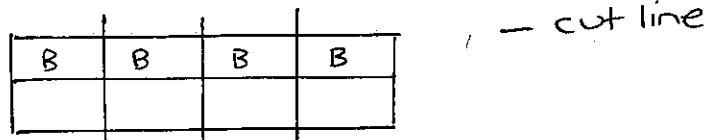
Cutting

	Number to cut	Size	Fabric tone
Fabric A	1 1	2" x 9" strips 4" x 4" square	light
Fabric B	1 1	2" x 9" strip 4" x 4" square	Dark or medium

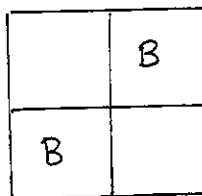
Assembly

A 1/4" seam is used for all seams sewn in the block.

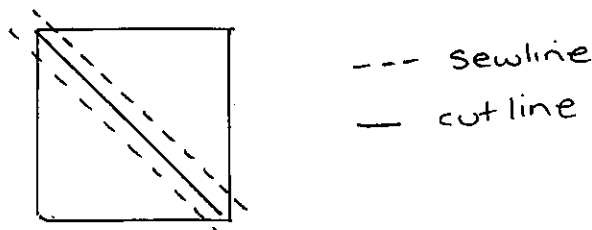
- Using fabric A (2" x 9"), fabric B (2" x 9") strips pin and sew the strips together along the 9" edge. Press the fabric with the seam to the dark side of fabric. Cut the length into 4 x 2" strips.



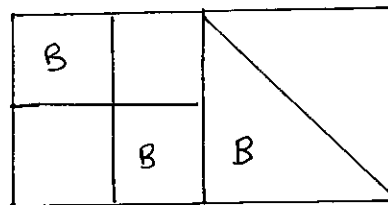
- Take 2 of the 2" x 4" strip of fabric A & B and match the seam to create a 4 patch block. Pin and sew together, the press to one side. Repeat for second set.



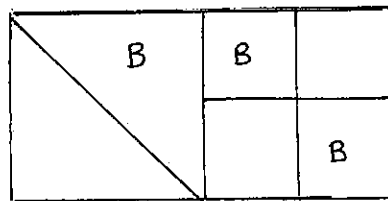
- Draw a line across Fabric A 4" square corner to corner using a fabric marker or pencil. Pin fabric A 4" square and B 4" square together and sew 1/4" each side of the drawn line. Cut on the pencil line using a rotary cutter and press the seam to the dark side of fabric.



4. First section placements see below. Sew ensuring that you pin and line up the edges. Press.



5. The next section is the same but position of the 2 sections are reversed. See below for layout and sew ensuring that you pin and line up the seams. Press.



6. Now sew the top to the bottom section. Match the middle seam and pin before sewing. Press.

Your finished quilt blocks look like this...

